

SUGGESTED USE Consume at least two capsules daily with food or as recommended by your physician. Optimum results are achieved by consuming five capsules daily, preferably with meals. **For questions about the use of this product call 800.332.7799.**

FOR OVER 40 YEARS

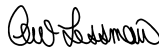
Unsurpassed Purity, Quality and Efficacy

100% SOLAR PRODUCTION | ZERO CARBON FOOTPRINT

*We Remain Uniquely Committed
to You and the Planet.*

You have my unwavering Promise.

PROCAPS



Andrew Lessman, Founder

QUESTIONS? | REORDERS?

800.800.1200 • www.PROCAPSLABS.com



www.HSN.com
800.944.9999



www.QVC.com
800.345.1515

606934-08M

694401



Manufactured by ProCaps Labs, Henderson, NV 89011



ANDREW LESSMAN

PROCAPS

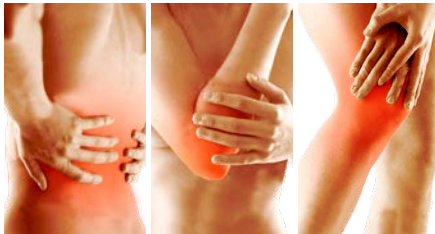
All Sulfate | Sodium Free

GLUCOSAMINE 1500

with

CHONDROITIN 1200™

Scientifically Established Joint Support
Clinically Established Levels and Forms



Dietary Supplement | **300** Easy-to-Swallow Capsules

Andrew Lessman's **GLUCOSAMINE 1500 with CHONDROITIN 1200** delivers the optimum potencies and ideal forms (All Sulfate and Sodium-Free) of the most essential ingredients for the repair and maintenance of healthy joint tissue. This unique formula begins with clinically-established levels and ideal forms of the most well-researched natural ingredients for joint health: **Glucosamine Sulfate** (1,500 mg) and **Chondroitin Sulfate** (1,200 mg). Glucosamine and Chondroitin have been the subject of thousands of published articles and extensive international recognition; however, they are not medicines to treat joint ailments, but more importantly represent the vital molecules that comprise the unique structure of all joint tissue – healthy or not. Moreover, the benefits of Glucosamine and Chondroitin have also been shown to extend beyond our joints and are also essential for the resiliency of other “elastic” tissues in the body, such as the skin, arteries, veins and heart valves. Glucosamine Sulfate has long been viewed as the first line of natural defense for joint tissues, but unlike ordinary products, we refuse to use cheap and unproven Glucosamine HCl (Hydrochloride). We only use the form of Glucosamine established in the scientific literature – Glucosamine Sulfate. We also use uniquely Sodium-Free Chondroitin Sulfate, which eliminates the risks of added Sodium and instead provides the benefits of 80 mg of essential Calcium. Sadly, typical joint products use inferior sources of both Glucosamine and Chondroitin, which do not possess the research-established benefits of Glucosamine Sulfate and Chondroitin Sulfate. In short, both Glucosamine and Chondroitin, along with Sulfur from Sulfate, provide essential structural ingredients that are the vital “building blocks” or the very “bricks and mortar” of our joints. By providing these essential structural molecules in their optimum forms and at their ideal potencies, we deliver maximum benefits to joint structure, health and function. Our joints never cease working and our uniquely formulated **Glucosamine 1500 with Chondroitin 1200** delivers the proper tools at their proven levels and in their ideal forms to help us combat the consequences of a lifetime of wear and tear. Our **Glucosamine 1500 with Chondroitin 1200** is uniquely **All Sulfate, Sodium-Free and Additive-Free** making it unlike any joint product in the world.

These statements have not been evaluated by the Food and Drug Administration. This product is not intended to diagnose, treat, cure or prevent any disease.

CONTAINS NO ADDITIVES OF ANY KIND

Supplement Facts

Serving Size 5 Capsules	Servings Per Container 60	
Amount Per Serving		%DV*
Vitamin C (as ascorbyl palmitate)	10 mg	11%
Calcium (from calcium chondroitin sulfate)	80 mg	6%
Potassium (from potassium glucosamine sulfate)	230 mg	5%
Glucosamine Sulfate as Potassium Glucosamine Sulfate	1,500 mg 2,000 mg	†
Chondroitin Sulfate (from calcium chondroitin sulfate)	1,200 mg	†

* Percent Daily Values (%DV) are based on a 2,000 calorie diet
† DV not established.

Other Ingredients. Gelatin capsule.

CONTAINS NO Milk, soy, yeast, corn, wheat, gluten, sodium, salt, sugar, fat, cholesterol, color, preservative or manufacturing additives.

CONTAINS an ingredient derived, purified and refined from the shells of shellfish (shrimp, crab and crawfish).