

**SUGGESTED USE** Two level scoops (approximately 1 teaspoon) provides the equivalent of 5 capsules of the encapsulated version of our **Glucosamine 1500 with Chondroitin 1200**. According to the clinical research, optimum results are achieved by consuming two scoops daily; however, you can consume one or two scoops daily or as recommended by your physician. This highly soluble powder can be added to a smoothie or beverage of your choosing. As with any dietary supplement, this product is most effective as part of a healthy diet and active lifestyle. **For questions about the use of this product call 800.332.7799.**

**FOR OVER 40 YEARS**

**Unsurpassed Purity, Quality and Efficacy**

100% SOLAR PRODUCTION | ZERO CARBON FOOTPRINT



*Andrew Lessman*

Andrew Lessman, Founder

**QUESTIONS? | REORDERS?**

**800.800.1200 • www.PROCAPSLABS.COM**



www.HSN.com  
800.944.9999



www.QVC.com  
800.345.1515

607980-10M

776959



Manufactured by ProCaps Labs, Henderson, NV 89011

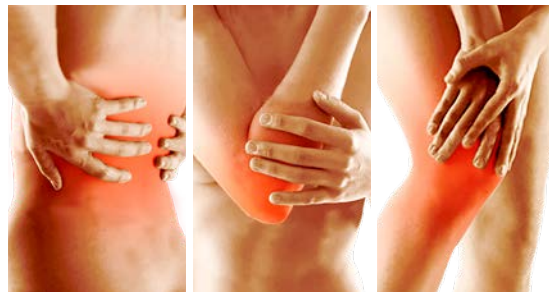


ANDREW LESSMAN



All Sulfate | Sodium Free  
**GLUCOSAMINE 1500**  
with  
**CHONDROITIN 1200™**

Scientifically Established Joint Support  
Clinically Established Levels and Forms



Dietary Supplement | **Bulk Powder** | 21.3 oz (1.33 lbs) (606.2 g)  
900 Capsule Equivalent

Andrew Lessman's **GLUCOSAMINE 1500 with CHONDROITIN 1200** delivers the optimum potencies and ideal forms (All Sulfate and Sodium-Free) of the most essential ingredients for the repair and maintenance of healthy joint tissue. This unique formula begins with clinically-established levels and forms of the most well-researched natural ingredients for joint health: **Glucosamine Sulfate** (1,500 mg) and **Chondroitin Sulfate** (1,200 mg). Glucosamine and Chondroitin have been recognized as the first line of natural defense for joint health. These unique ingredients are not drugs treating joint ailments, but more importantly, represent the vital structure of joint tissue itself. The benefits of Glucosamine and Chondroitin have also been shown to extend beyond our joints and also promote the resiliency of other flexible tissues in the body, such as the skin, arteries, veins and heart valves. Glucosamine Sulfate has long been viewed as the first line of natural defense for our joints, but unlike ordinary products, we do not use unproven and ineffective Glucosamine HCl (Hydrochloride). We only use the form of Glucosamine established as effective in the scientific literature – Glucosamine Sulfate. We also use Sodium-Free Chondroitin Sulfate, which eliminates the unnecessary and undesirable sodium present in ordinary Chondroitin Sulfate. Properly delivered, Glucosamine, Chondroitin and Sulfur from Sulfate represent the vital building blocks or the “bricks and mortar” of our joints. By providing these essential structural molecules in their optimum forms and at their ideal potencies, we deliver maximum benefits to joint structure, health and function. Our joints never cease working on our behalf and our uniquely formulated and ideally balanced **Glucosamine 1500 with Chondroitin 1200** is the perfect response to the consequences of a lifetime of wear and tear.

These statements have not been evaluated by the Food and Drug Administration. This product is not intended to diagnose, treat, cure or prevent any disease.

**CONTAINS NO ADDITIVES OF ANY KIND**

<b>Supplement Facts</b>				
Serving Size Servings Per Container	1 Scoop (1.6g)		2 Scoops (3.3g)	
	360		180	
Amount Per Serving	%DV*		%DV*	
<b>Glucosamine Sulfate</b> as Potassium Glucosamine Sulfate	<b>750 mg</b>	†	<b>1,500 mg</b>	†
	1,000 mg		2,000 mg	
<b>Chondroitin Sulfate</b> (from calcium chondroitin sulfate)	<b>600 mg</b>	†	<b>1,200 mg</b>	†
Calcium (from calcium chondroitin sulfate)	40 mg	3%	80 mg	6%
Potassium (from potassium glucosamine sulfate)	115 mg	2%	230 mg	5%

\* Percent Daily Values (%DV) are based on a 2,000 calorie diet. † Daily Value not established.

**CONTAINS NO** Milk, soy, yeast, corn, wheat, gluten, sodium, salt, sugar, fat, cholesterol, color, preservative, genetically modified (GMO) ingredients or manufacturing additives.

**Contains** an ingredient derived from the shells of shellfish (shrimp, crab and crawfish). This package is sold by weight, not by volume. It contains the full weight indicated on the label. Settling of contents can occur during shipment.